



CORESPATIAL

CORESPATIAL WHERE DATA MEETS PERFORMANCE

CoreSpatial is the ultimate geospatial platform...

Designed to help organizations unlock the full potential of their data and built with industry-leading technology. With scalability, security, and flexibility at its core, CoreSpatial integrates both open-source and proprietary data into one unified system.

Whether you're looking for a flexible, cloud-hosted solution or on-premise deployment, CoreSpatial is built to thrive in any environment. Take control of your geospatial data with a platform that delivers results-when it matters most.

Key Features:

- OGC-Compliant Data Encoding: Ensures your data remains consistent and interoperable.
- Data Access & Processing: Built to handle complex queries and operations using OGC standards.
- Advanced Visualization: OGC-compliant tools ensures that your data is accurately represented, empowering you to make critical decisions quickly.



CoreSpatial Server:
Host geospatial data
securely.

CoreSpatial Basemaps:
Worldwide coverage of
OSM

CoreSpatial Map
Manager: Manage new
high-resolution imagery

CoreSpatial HIFLD:
Critical data package

CoreSpatial Portal: All-
in-One content
management tool

**NEWMOYER
GEOSPATIAL
SOLUTIONS**

222 W Coleman Blvd
Mt. Pleasant, SC 29464

843-606-0424

newmoyergeospatial.com

Type	Layer Name	Disk Quota	Disk Used	BlobStore	Enabled	Preview	Actions
	elevation	N/A	N/A		✓	Select One	Seed/Truncate Empty
	mgrs_grid	N/A	N/A		✓	Select One	Seed/Truncate Empty
	osm_simple_dark_labels	N/A	N/A		✓	Select One	Seed/Truncate Empty
	osm_simple_light_labels	N/A	N/A		✓	Select One	Seed/Truncate Empty
	osm_simple_light_bg	N/A	N/A		✓	Select One	Seed/Truncate Empty
	osm_hybrid	N/A	N/A		✓	Select One	Seed/Truncate Empty
	osm	N/A	N/A		✓	Select One	Seed/Truncate Empty
	osm_simple_dark	N/A	N/A		✓	Select One	Seed/Truncate Empty
	osm_hybrid_imagery	N/A	N/A		✓	Select One	Seed/Truncate Empty
	utm_grid	N/A	N/A		✓	Select One	Seed/Truncate Empty
	osm_simple_dark_bg	N/A	N/A		✓	Select One	Seed/Truncate Empty
	imagery	N/A	N/A		✓	Select One	Seed/Truncate Empty

CoreSpatial Server

Easily host all your geospatial data in one single location. If security is a concern, it will not be with CoreSpatial. Our solution is hardened for any cyber compliance on any network.

We keep your CoreSpatial® environment running smoothly by proactively monitoring its performance. Through regular stress tests, capacity planning, and issue identification, we address problems before they affect your operations.

Support

NGS will provide 3rd tier support for all software components making up the CoreSpatial solution. It is expected that the customer's personnel and other technical support staff will make up 1st and 2nd tier support, and escalate issues as needed to NGS through our support email alias (support@newmoyergeospatial.com). Responses are guaranteed within 24 hours, 7 days a week, 365 days a year.

Software Updates

Updated software packages will be released **quarterly** including all components of CoreSpatial (GeoServer, Java, Jetty, PostgreSQL, PostGIS, GDAL, etc). This includes regular updates to the most recent stable version of the software provided by the respective open-source project. High priority security patches identified in the NIST National Vulnerability Database (NVD) with a CVE score of High or Critical will be released immediately upon availability. In some cases, this may include remediations implemented by NGS that limit functionality due to our prioritization of cybersecurity. In these cases, the CoreSpatial release notes will include detailed explanations with suggested workarounds.

222 W Coleman Blvd
Mt. Pleasant, SC 29464
843-606-0424



www.newmoyergeospatial.com





Map Manager

- Import
- Export
- Jobs
- Layers



CoreSpatial Basemaps

This package provides a set of basemap layers, composed of free and publicly available data. The following chart shows what we will include with the standard packaging, and then what extended coverage may be imported via provided scripts.

CoreSpatial Map Manager

You do not have to be a GIS expert to create high resolution imagery layers with Map Manager. Simply drag and drop your imagery and Map Manager handles the rest.

Enhanced Features and Seamless Integrations

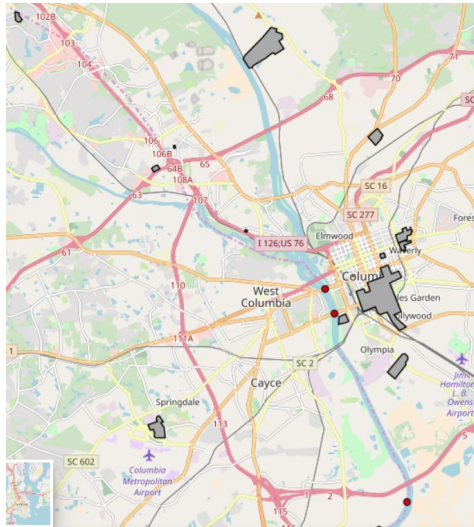
CoreSpatial does not just deliver the basics. We add enhanced features, tools, and integrations that would normally take days or weeks to configure. From out-of-the-box integrations with popular plugins to tailored functionality improvements, we make CoreSpatial a powerful, enterprise-ready platform. Plus, we offer curated basemaps and high-resolution imagery to give you the data you need, right from the start.

222 W Coleman Blvd
Mt. Pleasant, SC 29464
843-606-0424



www.newmoyergeospatial.com





CoreSpatial HIFLD

Knowing where our critical infrastructure is located is one thing, but putting it on the map with other operational data will give you the insights you need to make risk reduction decisions.

Key Components of HIFLD

1. **Critical Infrastructure:** Data on essential services such as power plants, water treatment facilities, and telecommunications infrastructure.
2. **Key Resources:** Information about vital assets like schools, hospitals, and government buildings.
3. **Public Services:** Details on emergency services including police stations, fire departments, and more.

Homeland Infrastructure Foundation-Level Data (HIFLD)

HIFLD data is incredibly versatile and used in a variety of applications, from disaster preparedness to infrastructure protection.

What is HIFLD Data?

HIFLD, or Homeland Infrastructure Foundation-Level Data, is a comprehensive dataset covering a wide range of geospatial information about critical infrastructure and key resources in the United States. This includes everything from power plants and water treatment facilities to schools and hospitals. Managed by the DHS, HIFLD aims to support homeland security, public safety, and emergency response efforts by providing accurate, up-to-date geospatial data to federal, state, and local agencies.

Benefits of Using HIFLD Data:

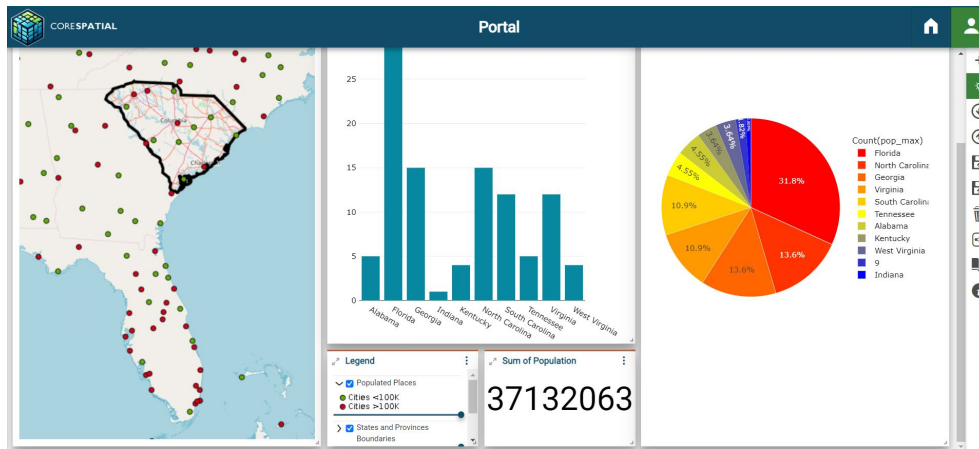
- **Accurate and Up-to-Date Information:** Having the most current information is crucial, especially in emergencies. HIFLD data is regularly updated, ensuring decision-makers have the latest and most accurate data at their fingertips.
- **Comprehensive Coverage:** HIFLD provides a complete picture of critical infrastructure and key resources, offering a holistic view that is essential for effective planning and response.
- **Enhanced Coordination:** With HIFLD data, different agencies can work from the same information, ensuring better coordination and more efficient response efforts.

222 W Coleman Blvd
Mt. Pleasant, SC 29464
843-606-0424



www.newmoyergeospatial.com





CoreSpatial Portal

A Comprehensive Geospatial Content Management Platform

CoreSpatial Portal, built on the powerful MapStore2 framework, is designed to be your all-in-one solution for managing geospatial content. Whether you need to create interactive maps, detailed dashboards, or compelling geostories, CoreSpatial Portal provides the tools and flexibility to bring your data to life.

CoreSpatial Portal makes it easy to create and explore maps that reveal the insights hidden within your data. With a user-friendly interface and robust visualization tools, you can layer multiple datasets, customize your map views, and highlight the information that matters most to you. Whether you are working on urban planning, environmental monitoring, or emergency response, CoreSpatial Portal empowers you to see the bigger picture.

Turn data into actionable insights with CoreSpatial Portal's advanced analytical capabilities. The platform allows you to perform complex geospatial analyses directly within your maps and dashboards, providing you with the information you need to make informed decisions. From spatial queries to statistical analysis, CoreSpatial Portal ensures that you have the tools necessary to dig deeper into your data.

Sometimes, a map alone is not enough to convey the full narrative. With CoreSpatial Portal, you can create dynamic geostories that combine maps, text, images, and multimedia elements to tell a compelling story. Whether you are documenting a project, showcasing research, or advocating for a cause, geostories provide a rich, engaging way to communicate your message.

222 W Coleman Blvd
Mt. Pleasant, SC 29464
843-606-0424



www.newmoyergeospatial.com

